

PhotoRescue 3.0 Quick Guide
PhotoRescue is © DataRescue 2001-2007
www.datarescue.com/photorescue

IMPORTANT WARNING

If you have lost data, erased pictures or formatted a card by mistake, please **DO NOT REUSE** the media before you have recovered and saved your pictures. Lost data can often be retrieved. Overwritten data can not!

❶ Connect your card reader to your computer and insert the media that should be recovered. A card reader is strongly recommended. Not all cameras support the USB Mass Storage protocol that is required for data-recovery.

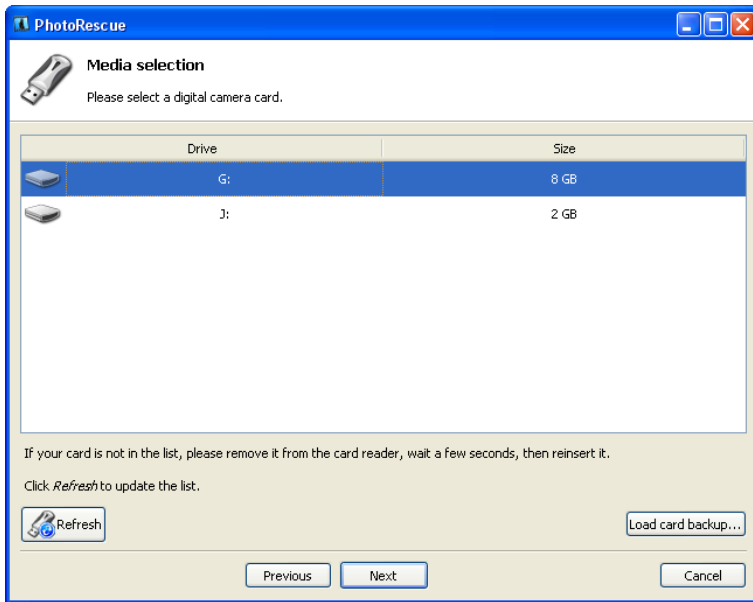
❷ Start PhotoRescue 3.0. You should see a screen similar to the one below.



You have 4 choices: proceed to a quick recovery, proceed to advanced recovery, take a backup of the card and register the program. In this quick guide, we will outline the quick recovery process. Click the quick recovery button.

3 Media Detection

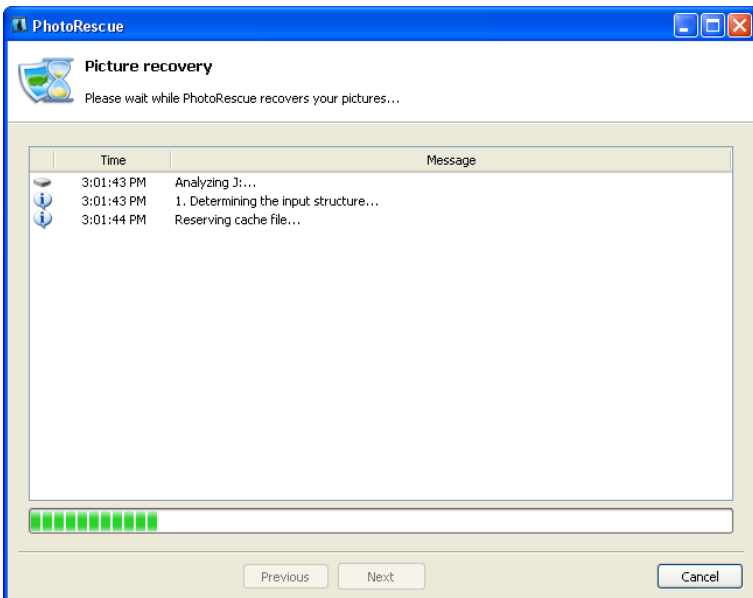
You should now see something like this



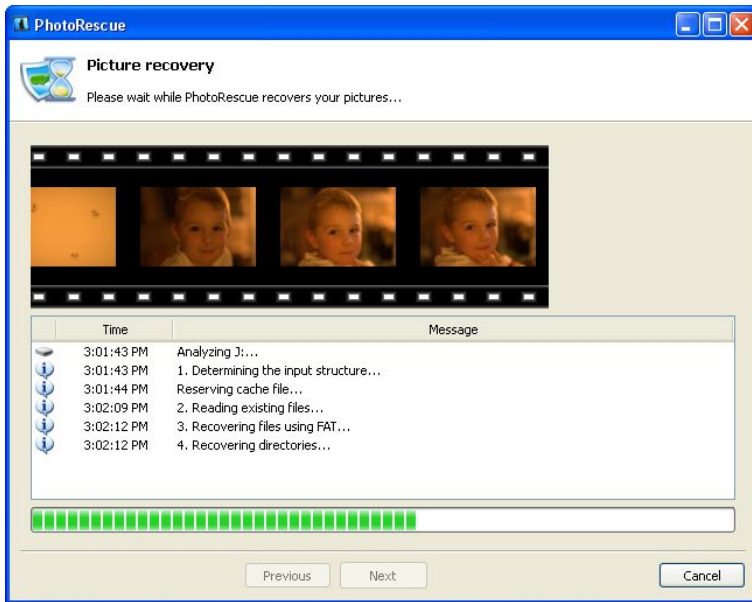
Two cards have been detected here, because two cards are inserted in the card reader. If you do not see a card at this point, try clicking refresh, disconnecting and reconnecting the card reader or, eventually, another card reader. In some cases, cards will not be visible at all either because their low-level configuration information has been corrupted or because they have suffered extensive electrical or physical damage. We will proceed with the recovery of drive J: by clicking on J: and then on the NEXT button.

4 Cache Allocation

Because cards are often bigger than available physical memory, a temporary workspace is now allocated. This may take a while, depending on the size of your card and the speed of your computer and card reader interface. The availability of a work space will speed up the rest of the recovery. If this option causes trouble, use the « advanced recovery » mode and disable caching.

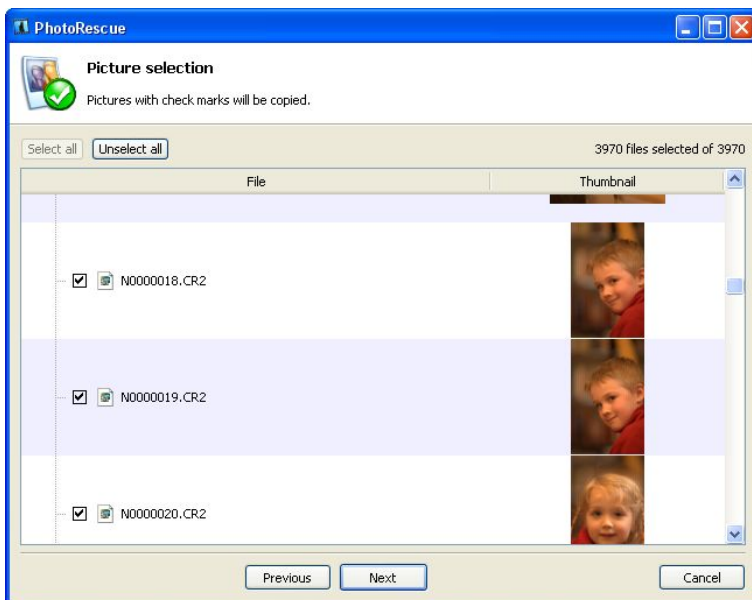


after the cache has been allocated, the actual recovery work begins. Recovered pictures will start to appear. Do not worry if, at first, you don't see thumbnails: PhotoRescue tries several different recovery methods on each media and, in some cases, only the last method yields results.



5 Select and Save the recovered files.

Once the recovery has been completed, you will see the thumbnails of the recovered pictures. Our thumbnails are generated on the fly, from the actual picture data that has just been recovered. We do not use the potentially misleading embedded thumbnails. In our case, erased Canon 5D raw files were retrieved. You have the option of selecting all or some pictures. Once your choice is made, click next.



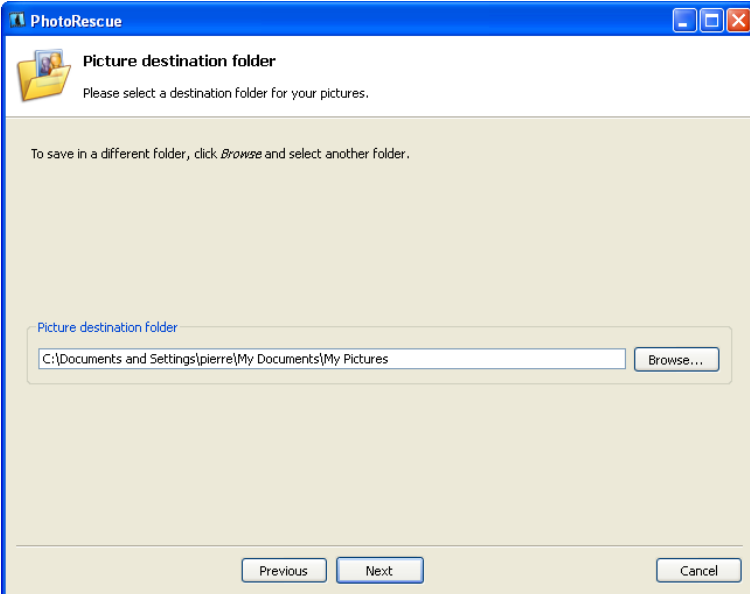
6 Registering the program

If the program is not registered, you will have the opportunity to register it at this point, without losing the current recovery. Just copy&paste (or type) the registration code you will receive in the registration e-mail to activate the save function of the program.



7 Saving the recovered pictures

You may now save the pictures you have just recovered. Save them into the folder of your choice. You may use the BROWSE button to explore your hard drive and create a new folder for the recovery. Please do not forget to note where you are saving your files!



8 Verify the recovery

We have learned that people tend to make successive mistakes when they are under stress. Losing data is certainly a stress. Please do check that you are able to find and use the recovered files and immediately make a backup copy of them before reusing the media you just recovered from.

9 Contacting support

Do not hesitate contacting us at support@datarescue.com. We respond to all queries within one business day, some times faster.