



## Kernel for PST to NSF

“Expert Email Migration Tool to Convert .PST to .NSF”

### PRODUCT GUIDE

# Table of Contents

---

|     |  |    |
|-----|--|----|
| 1.  | Introduction to Kernel for PST to NSF .....                | 5  |
| 1.1 | Using this Manual .....                                    | 5  |
| 1.2 | About Kernel for PST to NSF .....                          | 6  |
| 1.3 | Salient Features .....                                     | 6  |
| 1.4 | Who Should Use this Software? .....                        | 6  |
| 2.  | Getting Started .....                                      | 7  |
| 2.1 | Installation Pre-requisites.....                           | 7  |
| 2.2 | Downloading Kernel for PST to NSF for the First Time ..... | 8  |
| 2.3 | Install Kernel for PST to NSF.....                         | 8  |
| 2.4 | Start Kernel for PST to NSF .....                          | 8  |
| 2.5 | Uninstall Kernel for PST to NSF .....                      | 8  |
| 3.  | Software Interface .....                                   | 9  |
| 3.1 | Menu-bar.....  | 9  |
| 3.2 | Tool-bar.....  | 10 |
| 3.3 | Status Bar .....   | 11 |
| 3.4 | Customize User Interface.....                              | 11 |
| 4.  | Converting PST files to NSF files.....                     | 12 |
| 4.1 | Converting PST files to NSF files.....                     | 12 |
| 4.2 | Saving Converted Files .....                               | 15 |
| 4.3 | Viewing Converted Files .....                              | 17 |
| 5.  | Full Version .....   | 18 |
| 5.1 | Requirement of Full Version.....                           | 18 |
| 5.2 | Purchasing Full Version.....                               | 18 |
| 6.  | Support.....   | 19 |
| 7.  | Troubleshooting .....                                      | 20 |
| 7.1 | Common Issues .....  | 20 |
| 7.2 | Frequently Asked Questions .....                           | 20 |
| 8.  | Legal Notices .....  | 21 |
| 8.1 | Copyright .....  | 21 |

|     |                         |    |
|-----|-------------------------|----|
| 8.2 | Trademark .....         | 21 |
| 8.3 | Disclaimer .....        | 21 |
| 8.4 | License Agreement ..... | 21 |

# Table of Figures

---

|   |    |
|---|----|
| Figure 3.1: File Menu .....   | 9  |
| Figure 3.2: Help Menu .....   | 10 |
| Figure 4.1: Kernel for PST to NSF Window.....                             | 12 |
| Figure 4.2: Open Window.....  | 13 |
| Figure 4.3: Kernel for PST to NSF with the Selected PST File Window ..... | 14 |
| Figure 4.4: Save Options.....   | 15 |
| Figure 4.5: Select Outlook Folders .....                                  | 16 |
| Figure 4.6: Saving Complete Message .....                                 | 16 |
| Figure 4.7: View Mails .....  | 17 |

# 1. Introduction to Kernel for PST to NSF

---

Welcome to the user manual for Kernel for PST to NSF, the most powerful, professional and easy to use conversion software that helps you to convert emails and other items of PST file to NSF file which can be easily accessed with Lotus Notes. This user manual comprises step by step guidelines on using Kernel for PST to NSF.

## 1.1 Using this Manual

---

This user manual is intended to guide users on using Kernel for PST to NSF. We suggest that first time users should read this user manual completely and carefully before proceeding to use the software. However, if you are an experienced user, you can use the table of contents to find out information pertaining to the tasks that you need to perform by using Kernel for PST to NSF.

You can use the table of contents to navigate through different sections of this user manual. The table of contents lists all the sections that are contained in this user manual in chronological order. The user manual comprises the following sections:

- Introduction
- Getting Started
- Software Interface
- Converting PST files to NSF files
- Full Version
- Support
- Troubleshooting
- Legal Notices

Certain abbreviations have been used throughout this manual. For clear understanding of the contents of this user manual, please go through the list of abbreviations, mentioned below, before reading the manual.

### 1.1.1 List of Abbreviations

MS: Microsoft

PST: Personal Storage File

NSF: Notes System File

RAM: Random Access Memory

MB: Mega-Byte

GB: Giga-Byte

## 1.2 About Kernel for PST to NSF

---

Kernel for PST to NSF is an email migration tool for MS Outlook email client. Kernel for PST to NSF is result oriented software to convert emails and other items of .pst file to .nsf file. Kernel software successfully converts emails, calendar, drafts, journals and other items of pst file to nsf file to be easily accessed with Lotus Notes e-mail client.

Kernel for PST to NSF converts items of pst file and saves the converted items in the new or existing nsf file. Provide .pst file to the software, which will then convert and recreate same folder structure in a new or existing nsf file.

Quickly and securely convert user's emails, sent items, journals, drafts, appointments and contacts with Kernel for PST to NSF. For conversion, it supports every Lotus Notes version 8.0, 7.0 and 6.5 and MS Outlook 97 and above versions

## 1.3 Salient Features

---

Salient features of Kernel for PST to NSF include:

- It efficiently converts emails and other items of pst file to nsf file which can be easily accessed with Lotus Notes email client.
- Saves converted file in New or Existing NSF file
- Supports Unicode character conversion.
- Converts each and every item including emails, attachments, contacts, calendars, appointments, journals, to-do item list, sent mails, drafts, alarms, rules, created personal folders and many more.
- Saves converted item in Plain Text / With Formatting
- Kernel for PST to NSF supports every version of Lotus Notes and MS Outlook to perform the process of email migration.
- Free demo to test the capabilities of the tool before purchasing it.

## 1.4 Who Should Use this Software?

---

The capability of Kernel for PST to NSF to convert emails and other items of PST file to NSF file make it the best available tool for email migration. Kernel for PST to NSF efficiently converts emails and other items of a PST file to NSF file and provides professionals, organizations and individual users with a secure email migration process.

## 2. Getting Started

---

Now that you have understood the features and potential of Kernel for PST to NSF, you are ready to get hands on experience of the software. To start converting PST files to NSF files, first of all you will need to download and install this software.

It is strongly recommended that before installing Kernel for PST to NSF, you should go through the installation pre-requisites for the software to ensure that your computer is appropriately configured to run the software.

### 2.1 Installation Pre-requisites

---

#### 2.1.1 Hardware Requirements:

The hardware requirements for installing the software are as follows:

- Pentium Class Processor
- Minimum 64MB RAM (128 MB recommended)
- 10MB for Software installation
- Disk Space - Enough space to save the results

#### 2.1.2 Software Requirements:

The software requirements for installing the software can further be grouped into three categories – Operating system requirements and Lotus Notes and MS Outlook version requirements. The software requirements are as follows:

##### 2.1.2.1 Operating System Requirements

Supported Operating Systems:

- Windows Vista
- Windows XP
- Windows 2003
- Windows 2000

##### 2.1.2.2 MS Outlook Version Requirements

Supported MS Outlook versions:

- MS Outlook 97, MS Outlook 98, MS Outlook 2000, MS Outlook 2002, and MS Outlook 2003

### 2.1.2.3 Lotus Notes Version Requirements

Supported Lotus Notes versions:

- Lotus Notes8, Lotus Notes7 and Lotus Notes6.5

## 2.2 Downloading Kernel for PST to NSF for the First Time

---

After checking your computer with the prescribed system requirements for Kernel for PST to NSF, you can download and install the software on your computer. You can buy the full version of the software from any one of our authorized resellers – Element5, Asknet and 2CO.

If you want to try using Kernel for PST to NSF before buying it, you can download the evaluation version from the following link:

<http://www.nucleustechnologies.com/download-pst-to-nsf-conversion.php>

## 2.3 Install Kernel for PST to NSF

---

After downloading the installer file for Kernel for PST to NSF, you can install the software by running the file.

To install Kernel for PST to NSF:

1. Double-click the Kernel for PST to NSF installer. Follow the on-screen instructions. The **Setup Installation Complete** screen will be displayed.
2. Click **Finish** to launch the software.

## 2.4 Start Kernel for PST to NSF

---

To start Kernel for PST to NSF:

Click the **Start → All Programs → Kernel for PST to NSF**

Alternatively, you can launch Kernel for PST to NSF by double-clicking the shortcut icon available on the Desktop and Quick Launch icon.

## 2.5 Uninstall Kernel for PST to NSF


---

You may need to uninstall Kernel for PST to NSF. To uninstall Kernel for PST to NSF:

1. Click **Start → All Programs → Kernel for PST to NSF → Uninstall Kernel for PST to NSF**

A warning message will be displayed.

2. Click **Yes** to uninstall Kernel for PST to NSF.

 Before proceeding to uninstall Kernel for PST to NSF, you must ensure that the software is not running on your computer.

You can alternatively uninstall Kernel for PST to NSF from the **Control Panel** by performing the following steps:

1. Click the **Start Menu → Control Panel** and then double click the **Add or Remove Programs** icon.
2. Select **Kernel for PST to NSF** and click **Remove**. A warning message will be displayed.
3. Click **Yes** to uninstall Kernel for PST to NSF.

## 3. Software Interface

---

Now that Kernel for PST to NSF has been installed on your computer, you can start using the software after getting acquainted with the software interface.

### 3.1 Menu-bar

---

The menu-bar of Kernel for PST to NSF comprises two main menus – File and Help.

#### 3.1.1 File Menu

The **File** menu comprises three menu items.

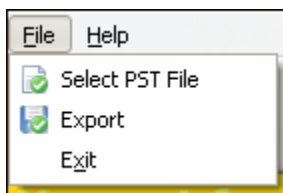


Figure 3.1: File Menu

Menu items in the **File** menu:

| Field Name      | Field Description         |
|-----------------|---------------------------|
| Select PST File | Opens the Open Window     |
| Export          | Opens Save Options Window |
| Exit            | Close the software        |

#### 3.1.2 Help Menu

The **Help** menu comprises three menu items.

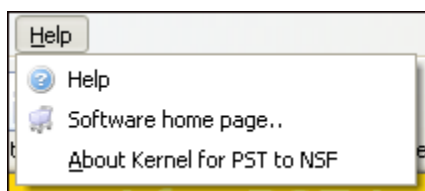


Figure 3.2: Help Menu

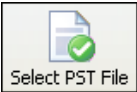

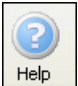

Menu Items in the Help menu:

| Field Name                  | Field Description  |
|-----------------------------|--|
| Help                        | Displays help information pertaining to performing various tasks using Kernel for PST to NSF |
| Software Homepage           | Visit software homepage of website   |
| About Kernel for PST to NSF | Displays version-related and support information of Kernel for PST to NSF                    |

## 3.2 Tool-bar

The tool-bar in Kernel for PST to NSF is displayed below the menu-bar. The tool-bar provides a convenient and user-friendly method to perform certain actions that can also be performed by using the menu-bar.

Read the information in the table below to find out about the tool-bar buttons:

| Button  | Button Name     | Button Description                                |
|---|-----------------|---|
|  | Select PST File | Opens the Open Window                             |
|  | Export          | Opens the Save Options Window                     |
|  | Help            | Displays the user manual of Kernel for PST to NSF |
|  | Buy Online      | Purchase the software online from website         |

### 3.3 Status Bar

---

Status bar is displayed at the bottom of the software window. The text 'www.nucleustechnologies.com' is displayed on the status bar when you open the software. The Status bar also displays the text 'CAP', 'NUM', 'SCRL' which respectively correspond to the Caps Lock, Num Lock, and Scroll Lock keys on your keyboard. If any of these keys are pressed, the color of the corresponding text will turn blue/black.

### 3.4 Customize User Interface

---

You can add or remove toolbar buttons by clicking:

- ▾ → **Add or Remove Buttons** → **Standard** in the toolbar and selecting appropriate buttons.

# 4. Converting PST files to NSF files

## 4.1 Converting PST files to NSF files

Now that you have complete familiarity of the user interface of Kernel for PST to NSF, you are ready to convert PST files to NSF files. For converting PST files to NSF files, follow these simple steps:

- Launch Kernel for PST to NSF

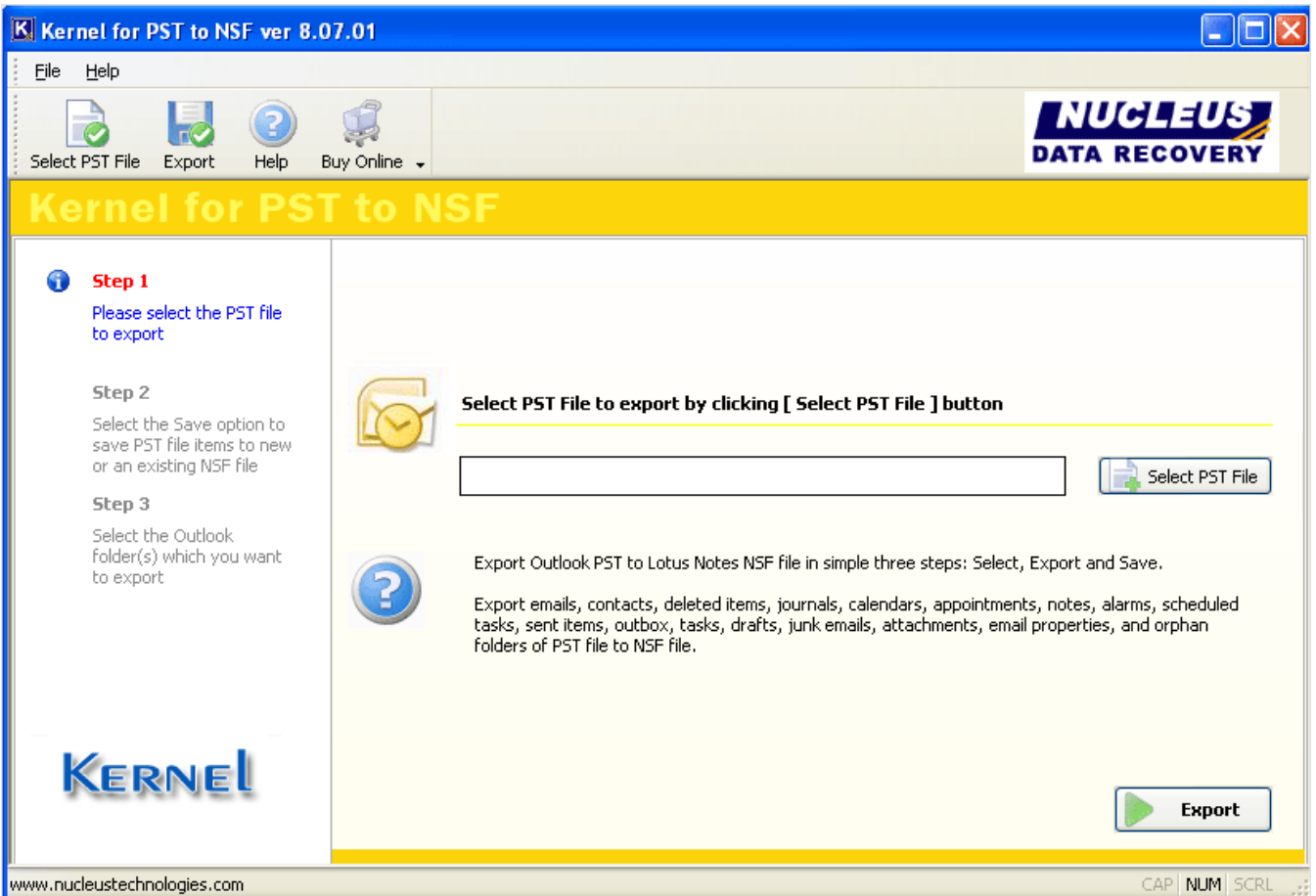


Figure 4.3: Kernel for PST to NSF Window

- Click **Select PST File** to select the .pst file. Open window to select the PST file will appear.

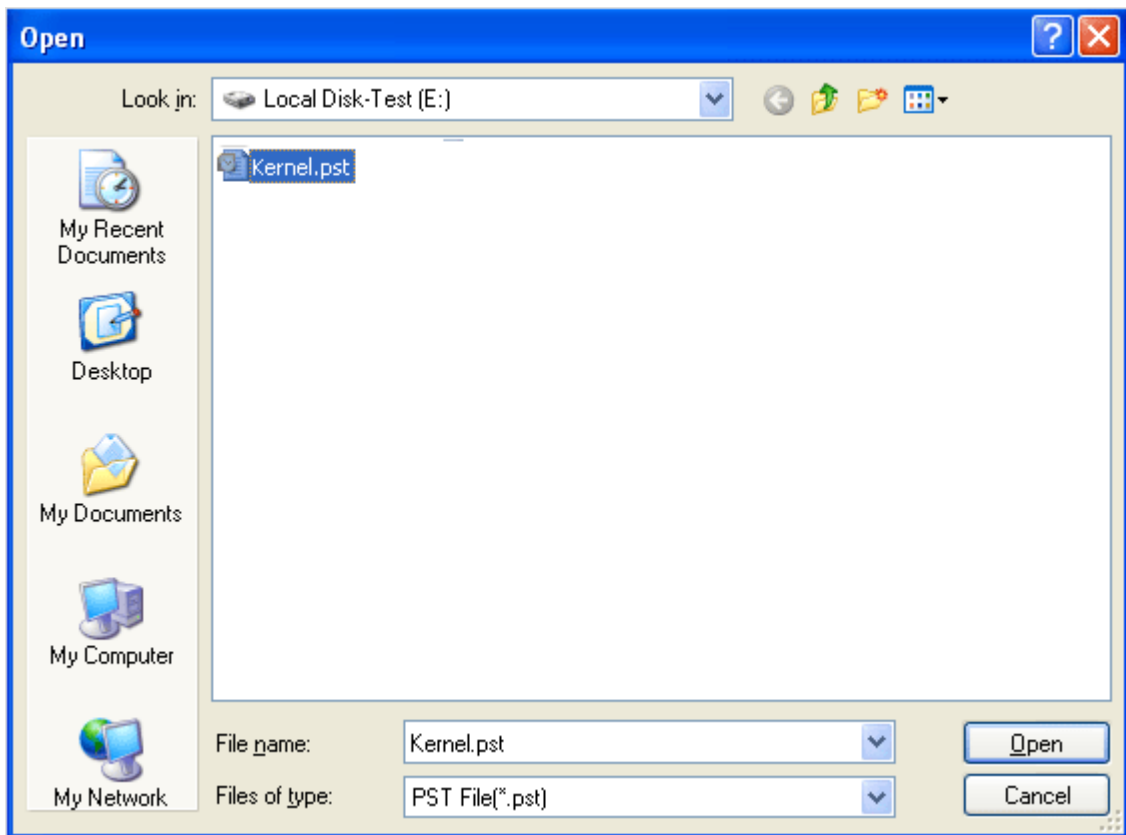


Figure 4.2: Open Window

- Select the .PST file from your hard drive and click **Open**. Selected .pst file will get listed on the screen of the software.

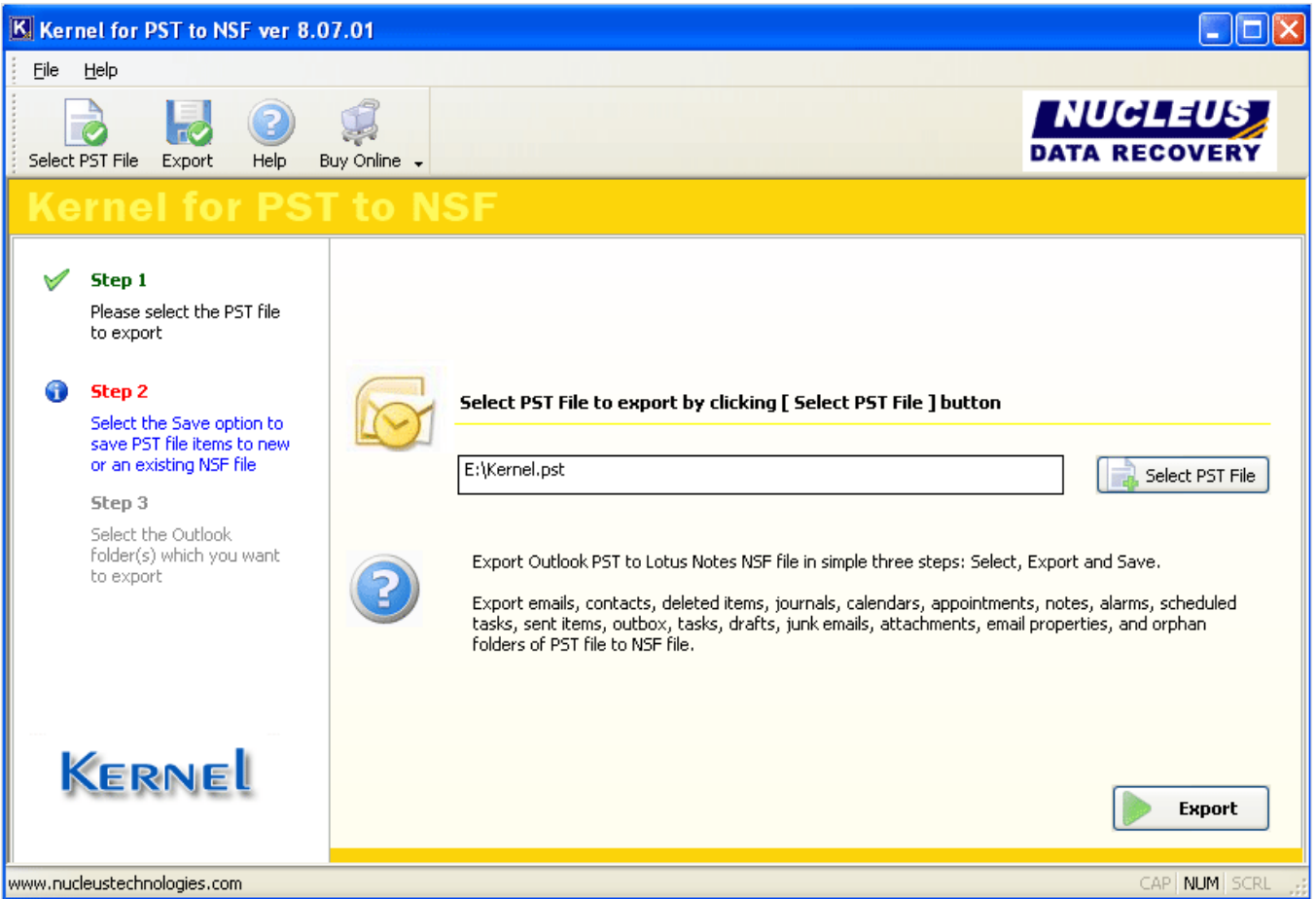


Figure 4.3: Kernel for PST to NSF with the Selected PST File Window

- Click **Export** button to save the converted emails and other items. Save Options window will appear.

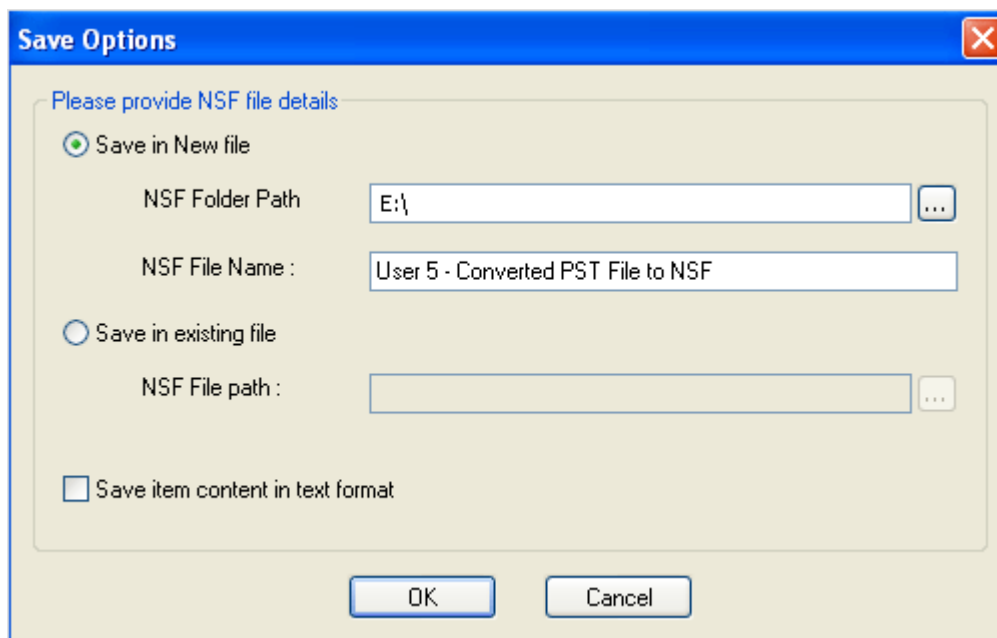


Figure 4.4: Save Options

- This Window contains two saving options i.e. Save in New File and Save in Existing File. Select the suitable saving option and click **OK**.

## 4.2 Saving Converted Files

---

To save the converted file, these steps need to be performed:

- As you click **Export** , the Save Options window will appear:
- Kernel for PST to NSF provides two saving options: Save in New file or Save in Existing file
- Define the NSF file settings:
  - **Save in New file:** If you want to save the converted items in any new NSF file
  - **NSF Folder Path:** The NSF file path location where you want to save the file on your hard drive.
  - **NSF File Name:** The name of the NSF file which you are saving
- If you want to save the converted items in any existing NSF file, then define the NSF file path location where you want to save the file on your hard drive.
- If you want to save the items of PST file without formatting, then check **Save Item Content in Text format**
- Select Save in New file or Save in existing file and define the respective settings. Click "**OK**".
- Close all instances of Microsoft Outlook and Lotus Notes, if running and click "OK" button to continue with the saving process.

- As you click **OK**, the software scans the listed .PST file and displays folders that the .PST file contains.
- Select the folder which you want to save in the .nsf file and click **OK** to continue with the saving process.

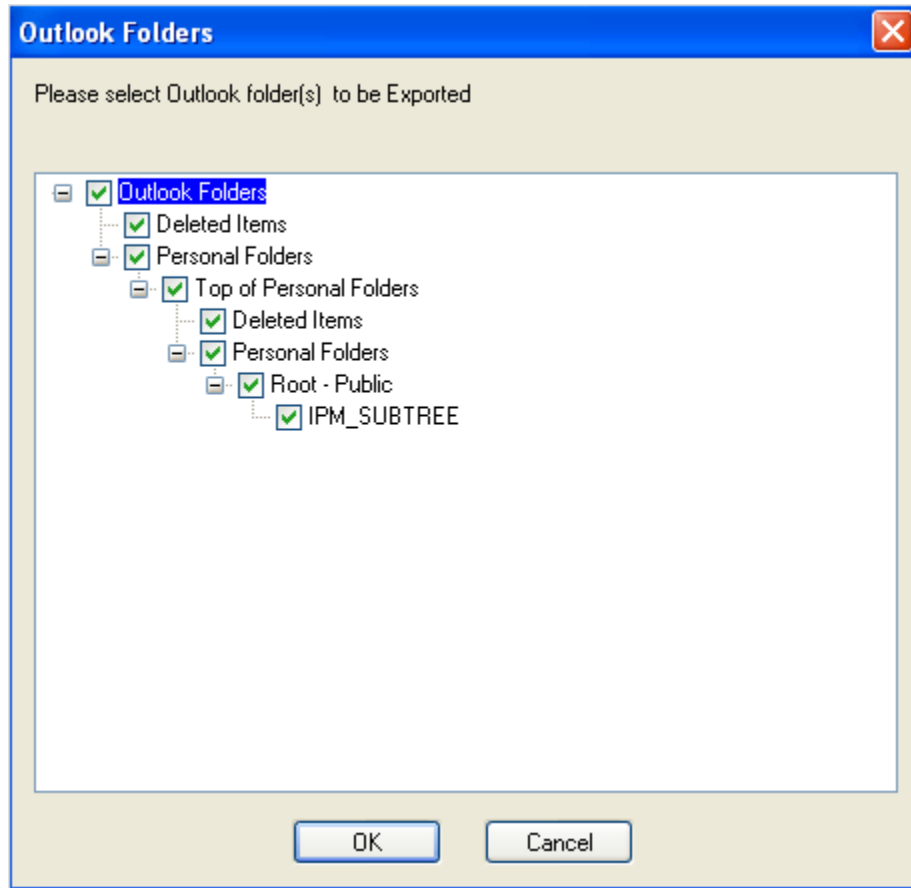


Figure 4.5: Select Outlook Folders

- Once saving process is successfully completed, a message will appear. Click **OK**.

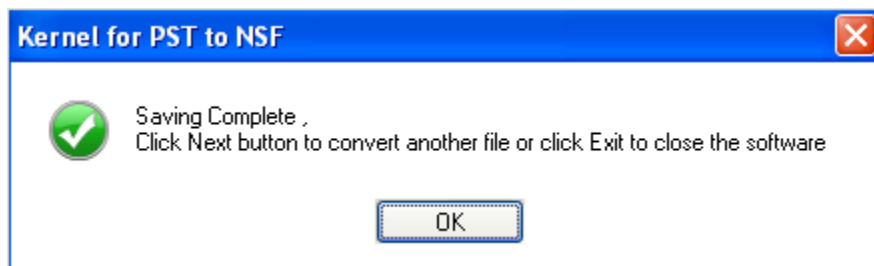


Figure 4.6: Saving Complete Message

## 4.3 Viewing Converted Files

Kernel PST to NSF saves the converted PST file in NSF file format to be easily accessed with Lotus Notes email client. To view any file, follow these steps:

- Open the Lotus Notes email client application and click the Folders section.
- All the Converted Folder of PST file get saved in the respective Folder of the NSF file, which can be viewed with Lotus Notes. For example- Items of Deleted Items folder of PST file will get saved in the Deleted Items folder of NSF file.
- Click any of the folders in **Folders** section and view the items contained in it.
- Click the item to view the content.

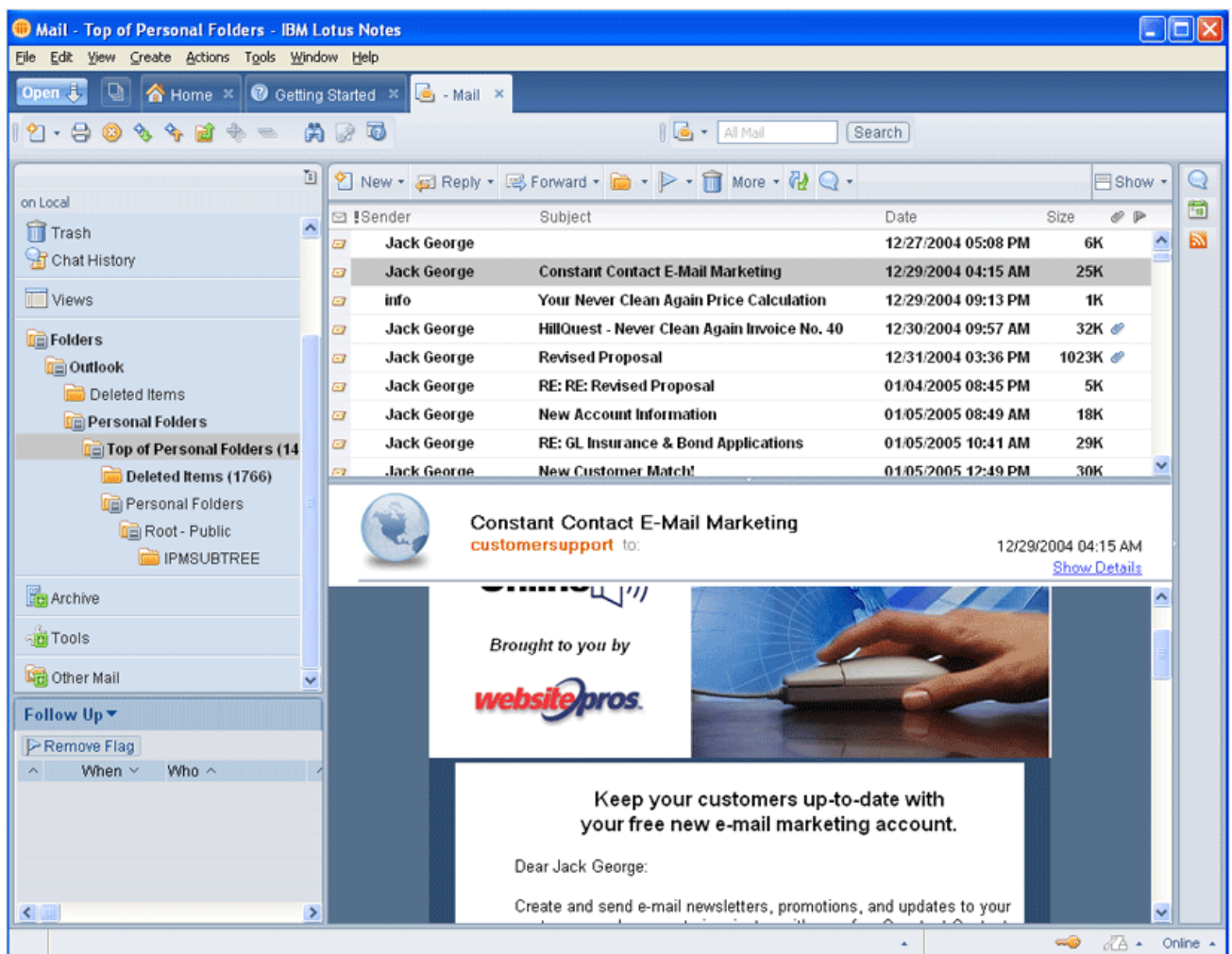


Figure 4.7: View Mails

## 5. Full Version

---

Although you can use Kernel for PST to NSF evaluation version for free and experience the capabilities of the software, there are certain features that are not available in the evaluation version.

### 5.1 Requirement of Full Version

---

The free to evaluate demo version of Kernel for PST to NSF software is fully functional in its conversion capabilities. It will convert your .PST file to .NSF file and lets you to view the items of NSF file with Lotus Notes. But due to demo limitation evaluation version saves only first 10 emails and other items of the PST file.

You will need to buy the full version of the software to view every converted email and other items of PST file.

### 5.2 Purchasing Full Version

---

You can buy the full version of Kernel for PST to NSF from any one of our authorized resellers – Element5, Asknet and 2CO.

As soon the purchase transaction with our resellers gets completed, our sales team will send you an email comprising the URL to download the full version of Kernel for PST to NSF and activation details of the software.

## 6. Support

---

We have an extensive and efficient support system in place to assist our customers with all issues related to using Kernel for PST to NSF. The software comes with an embedded help manual that can be accessed by clicking **Help→Software Help** in the menu-bar. You can also press the F1 key on the keyboard of your computer to access the embedded help of Kernel for PST to NSF.

You can access the online help for Kernel for PST to NSF at <http://www.nucleustechnologies.com/Online-Helps.html>

View Animated Working demo of Kernel for PST to NSF at [http://www.nucleustechnologies.com/Animated\\_Demo\\_PST\\_to\\_NSF.html](http://www.nucleustechnologies.com/Animated_Demo_PST_to_NSF.html)

We also have live support wherein you can chat with our software experts at <http://www.nucleustechnologies.com/Support.html>

To talk on phone with our software experts call:

**Help line:**

+91-9818725861

1-866-348-7872 (Toll Free for USA/CANADA)

You can also email us about your queries at;

[sales@nucleustechnologies.com](mailto:sales@nucleustechnologies.com) for Sales

[support@nucleustechnologies.com](mailto:support@nucleustechnologies.com) for Support

[contact@nucleustechnologies.com](mailto:contact@nucleustechnologies.com) for General Queries

# 7. Troubleshooting

---

This section deals with your generic and specific queries pertaining to using Kernel for PST to NSF.

## 7.1 Common Issues

---

Why does Kernel for PST to NSF have limitations in evaluation copy?

The free evaluation version of Kernel for PST to NSF is intended to enable you to experience the capabilities of the software. You will need to buy the software to save every email and other item of the converted PST file.

## 7.2 Frequently Asked Questions

---

### How to Buy Kernel for PST to NSF?

You can buy Kernel for PST to NSF online at <http://www.nucleustechnologies.com/buy-pst-to-nsf-conversion.php>

### I have lost my full version for Kernel for PST to NSF. Can you help me?

Please email us at [sales@nucleustechnologies.com](mailto:sales@nucleustechnologies.com). Please include your name, address, email address, and order confirmation number (if you have it). We will be happy to help you.

## 8. Legal Notices

---

This section comprises the legal specification about Kernel for PST to NSF and the company NUCLEUS DATA RECOVERY.COM PRIVATE LIMITED

### 8.1 Copyright

---

NUCLEUS DATA RECOVERY.COM PRIVATE LIMITED, Nucleus Kernel accompanied user manual and documentation are copyright of NUCLEUS DATA RECOVERY.COM PRIVATE LIMITED, with all rights reserved. Under the copyright laws, this user manual cannot be reproduced in any form without the prior written permission of NUCLEUS DATA RECOVERY.COM PRIVATE LIMITED. No Patent Liability is assumed, however, with respect to the use of the information contained herein.

© NUCLEUS DATA RECOVERY.COM PRIVATE LIMITED. All rights reserved.

### 8.2 Trademark

---

Nucleus Kernel ® is a copyright work of NUCLEUS DATA RECOVERY.COM PRIVATE LIMITED

Windows 95®, Windows 98®, Windows ME®, Windows NT®, Windows 2000 Server®, Windows 2000 Advanced Server®, Windows 2003 Server®, Windows XP®, Windows Vista, MS-DOS are registered trademarks of Microsoft Corporation.

All other brand and product names are trademarks or registered trademarks of their respective companies.

### 8.3 Disclaimer

---

The Information contained in this manual, including but not limited to any product specifications, is subject to change without notice. NUCLEUS DATA RECOVERY.COM PRIVATE LIMITED provides no warranty with regard to this manual or any other information contained here in and here by expressly disclaims any implied warranties of merchantability or fitness for any particular purpose with regard to any of the foregoing NUCLEUS DATA RECOVERY.COM PRIVATE LIMITED assumes no liability for any damages incurred directly or indirectly from any technical or typographical errors or omissions contained here in or for discrepancies between the product and the manual. In no event shall NUCLEUS DATA RECOVERY.COM PRIVATE LIMITED, be liable for any incidental, consequential special, or exemplary damages, whether based on tort, contract or otherwise, arising out of or in connection with this manual or any other information contained here in or the use there of.

### 8.4 License Agreement

---

Kernel for PST to NSF Copyright © by NUCLEUS DATA RECOVERY.COM PRIVATE LIMITED

Your Agreement to this License

You should carefully read the following terms and conditions before using, installing or distributing this software, unless you have a different license agreement signed by NUCLEUS DATA RECOVERY.COM PRIVATE LIMITED. The terms and conditions of this License describe the permitted use and users of each Licensed Copy of Kernel for PST to NSF. For purposes of this License, if you have a valid license, you have the right to use a single Licensed Copy of Nucleus Kernel.

## Scope of License

Each Licensed Copy of Kernel for PST to NSF may either be used by a single person or used non-simultaneously by multiple people who use the software personally installed on a single workstation. All rights of any kind in Nucleus Kernel, which are not expressly granted in this License, are entirely and exclusively reserved to and by NUCLEUS DATA RECOVERY.COM PRIVATE LIMITED. You may not rent, lease, modify, translate, reverse engineer, decompile, disassemble, or create derivative works based on, Nucleus Kernel, nor permit anyone else to do so. You may not make access to Nucleus Kernel available to others in connection with a service bureau, application service provider, or similar business, nor permit anyone else to do so.

## Warranty Disclaimers and Liability Limitations

Kernel for PST to NSF, and any and all accompanying software, files, data and materials, are distributed and provided AS IS and with no warranties of any kind, whether expressed or implied. In particular, there is no warranty for the quality of data recovered. You acknowledge that good data processing procedure dictates that any program, including Nucleus Kernel, must be thoroughly tested with non-critical data before there is any reliance on it, and you hereby assume the entire risk of all use of the copies of Nucleus Kernel covered by this License. This disclaimer of warranty constitutes an essential part of this License. In addition, in no event does NUCLEUS DATA RECOVERY.COM PRIVATE LIMITED authorize you or anyone else to use Kernel for PST to NSF in applications or systems where Kernel for PST to NSF failure to perform can reasonably be expected to result in a significant physical injury, or in loss of life. Any such use is entirely at your own risk, and you agree to hold NUCLEUS DATA RECOVERY.COM PRIVATE LIMITED harmless from any and all claims or losses relating to such unauthorized use.

## General

This License is the complete statement of the agreement between the parties on the subject matter, and merges and supersedes all other or prior understandings, purchase orders, agreements and arrangements. This License shall be governed by the laws of the State of Delhi. Exclusive jurisdiction and venue for all matters relating to this License shall be in courts and for a located in the State of Delhi, and you consent to such jurisdiction and venue. There are no third party beneficiaries of any promises, obligations or representations made by NUCLEUS DATA RECOVERY.COM PRIVATE LIMITED herein.

Any waiver by NUCLEUS DATA RECOVERY.COM PRIVATE LIMITED of any violation of this License by you shall not constitute, nor contribute to, a waiver by NUCLEUS DATA RECOVERY.COM PRIVATE LIMITED of any other or future violation of the same provision, or any other provision, of this License.